

2025

ZAGORŠČAK, M., **ABDELHAKIM, L.**, RODRIGUEZ-GRANADOS, N. Y., ŠIROKÁ, J., GHATAK, A., BLEKER, C., BLEJEC, A., ZRIMEC, J., NOVÁK, O., PĚNČÍK, A., BAEBLER, Š., PEREZ BORROTO, L., SCHUY, C., ŽUPANIČ, A., AFJEHI-SADAT, L., WURZINGER, B., WECKWERTH, W., POMPE NOVAK, M., KNIGHT, M. R., ... **PANZAROVA, K.**, TEIGE, M. (2025).

Integration of multi-omics data and deep phenotyping provides insights into responses to single and combined abiotic stress in potato. Plant Physiology, 197(4), kiaf126.

[HTTPS://DOI.ORG/10.1093/PLPHYS/KIAF126](https://doi.org/10.1093/plphys/kiaf126)

TIETZE, H., **ABDELHAKIM, L.**, PLESKAČOVÁ, B., KURTZ-SOHN, A., FRIDMAN, E., NIKOLOSKI, Z., & **PANZAROVÁ, K.** (2025).

Prediction of harvest-related traits in barley using high-throughput phenotyping data and machine learning. Frontiers in Plant Science, 16.

[HTTPS://DOI.ORG/10.3389/FPLS.2025.1686506](https://doi.org/10.3389/fpls.2025.1686506)

BALKOVA, D., MALA, K., HEJATKO, J., **PANZAROVA, K.**, **ABDELHAKIM, L.**, PLESKACOVA, B., & SAMALOVA, M. (2025).

Differential expression and localization of expansins in Arabidopsis shoots: implications for cell wall dynamics and drought tolerance. Frontiers in Plant Science, 16.

[HTTPS://DOI.ORG/10.3389/FPLS.2025.1546819](https://doi.org/10.3389/fpls.2025.1546819)

NEUWIRTHOVÁ, E., STEJSKAL, J., LHOTÁKOVÁ, Z., KORECKÝ, J., ČEPL, J., NIKODEM, A., **PANZAROVÁ, K.**, ALBRECHTOVÁ, J., & LSTIBŮREK, M. (2025).

Drought Response and Genetic Variation in Scots Pine Seedlings' Provenances: Insights From High-Throughput Phenotyping for Climate-Resilient Forestry. Evolutionary Applications, 18(10).

[HTTPS://DOI.ORG/10.1111/EVA.70157](https://doi.org/10.1111/EVA.70157)

SHU, M., HARFOUCHE, A. L., **TRTÍLEK, M.**, **PANZAROVÁ, K.**, ALASIA, O. F., LAGERGREN, J. H., LABBÉ, A., ENGLE, N. L., CLARK, M. M., CHEN, J.-G., TUSKAN, G. A., & TSCHAPLINSKI, T. J. (2025).

Leveraging hyperspectral phenotyping for accurate, non-destructive prediction of metabolite profiles in poplar under drought stress. Environmental and Experimental Botany, 237, 106218.

[HTTPS://DOI.ORG/10.1016/J.ENVEXPBOT.2025.106218](https://doi.org/10.1016/j.envexpbot.2025.106218)

2024

ABDELHAKIM, L. O. A., PLESKAČOVÁ, B., RODRIGUEZ-GRANADOS, N. Y., SASIDHARAN, R., PEREZ-BORROTO, L. S., SONNEWALD, S., GRUDEN, K., VOTHKNECHT, U. C., TEIGE, M., & **PANZAROVÁ, K.** (2024).

High Throughput Image-Based Phenotyping for Determining Morphological and Physiological Responses to Single and Combined Stresses in Potato. JoVE, 208, e66255.

[HTTPS://DOI.ORG/DOI:10.3791/66255](https://doi.org/10.3791/66255)



BALAKHONOVA, V., PUSHKAROVA, N., SKALAK, J., DOBISOVA, T., **BENEDIKTY, Z., PANZAROVA, K., TRTILEK, M., & HEJÁTKO, J.** (2024).

Non-invasive Assay for Chlorophyll Biosynthesis Kinetics Determination during Early Stages of Arabidopsis De-etiolation. *Journal of Visualized Experiments*, 203.

[HTTPS://DOI.ORG/10.3791/66087](https://doi.org/10.3791/66087)

EBRAHIMI NAGHANI, S., ŠMERINGAI, J., **PLESKAČOVÁ, B., DOBISOVÁ, T., PANZAROVÁ, K., PERNISOVÁ, M., & ROBERT, H. S.** (2024).

Integrative phenotyping analyses reveal the relevance of the phyB-PIF4 pathway in Arabidopsis thaliana reproductive organs at high ambient temperature. *BMC Plant Biology*, 24(1), 721.

[HTTPS://DOI.ORG/10.1186/S12870-024-05394-W](https://doi.org/10.1186/s12870-024-05394-w)

RUDOLF, J., TOMOVICOVA, L., **PANZAROVA, K., FAJKUS, J., HEJATKO, J., & SKALAK, J.** (2024).

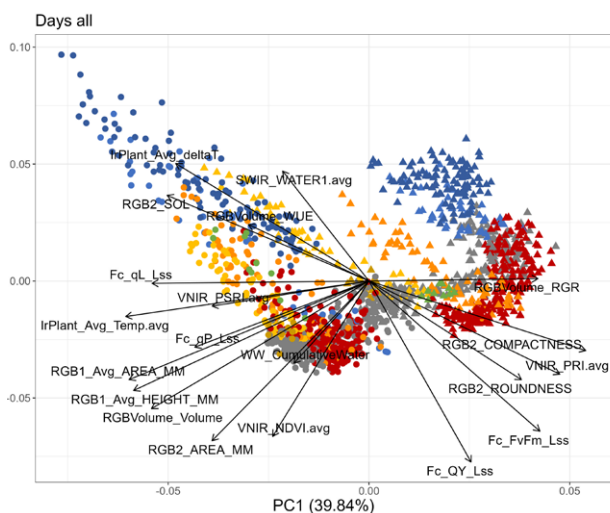
Epigenetics and plant hormone dynamics: a functional and methodological perspective. *Journal of Experimental Botany*, 75(17), 5267–5294.

[HTTPS://DOI.ORG/10.1093/JXB/ERAEO54](https://doi.org/10.1093/jxb/erae054)

TIWARI, L. D., BDOLACH, E., PRUSTY, M. R., BODENHEIMER, S., BE'ERY, A., FAIGENBOIM-DORON, A., YAMAMOTO, E., **PANZAROVÁ, K., KASHKUSH, K., SHENTAL, N., & FRIDMAN, E.** (2024).

Cytosuclear interactions modulate the plasticity of photosynthetic rhythmicity and growth in wild barley. *Physiologia Plantarum*, 176(1).

[HTTPS://DOI.ORG/10.1111/PPL.14192](https://doi.org/10.1111/ppl.14192)



ULLAH, S., PANZAROVÁ, K., TRTÍLEK, M., LEXA, M., MÁČALA, V., NEUMANN, K., ALTMANN, T., HEJÁTKO, J., PERNISOVÁ, M., & GLADILIN, E. (2024).

High-Throughput Spike Detection in Greenhouse Cultivated Grain Crops with Attention Mechanisms-Based Deep Learning Models. *Plant Phenomics*, 6, 0155.

[HTTPS://DOI.ORG/10.34133/PLANTPHENOMICS.0155](https://doi.org/10.34133/PLANTPHENOMICS.0155)

2023

BALAKHONOVA, V., DOBISOVA, T., **BENEDIKTY, Z., PANZAROVA, K., PYTELA, J., KOCI, R., SPYROGLOU, I., KOVACOVA, I., ARNAUD, D., SKALAK, J., TRTILEK, M., & HEJATKO, J.** (2023).

iReenCAM: automated imaging system for kinetic analysis of photosynthetic pigment biosynthesis at high spatiotemporal resolution during early deetiolation. *Frontiers in Plant Science*, 14.

[HTTPS://DOI.ORG/10.3389/FPLS.2023.1093292](https://doi.org/10.3389/fpls.2023.1093292)

FINDUROVÁ, H., VESELÁ, B., **PANZAROVÁ, K., PYTELA, J., TRTÍLEK, M., & KLEM, K.** (2023).

Phenotyping drought tolerance and yield performance of barley using a combination of imaging methods. *Environmental and Experimental Botany*, 209, 105314.

[HTTPS://DOI.ORG/10.1016/J.ENVEXPBOT.2023.105314](https://doi.org/10.1016/j.envexpbot.2023.105314)

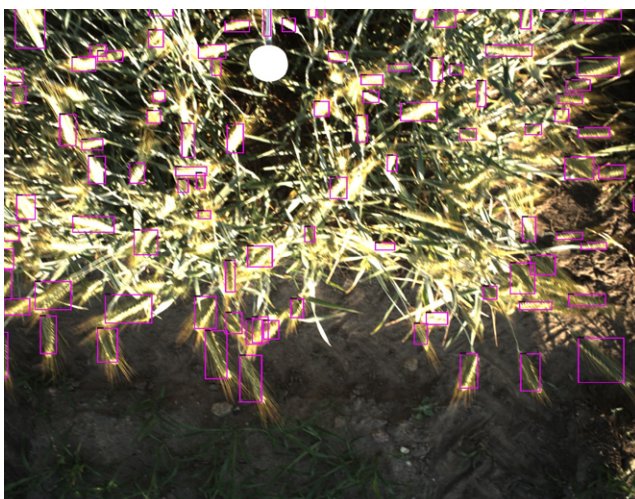


JEDLIČKOVÁ, V., ŠTEFKOVÁ, M., SEDLÁČEK, M., PANZAROVÁ, K., & ROBERT, H. S. (2023). Hairy Root Transformation and Regeneration in *Arabidopsis thaliana* and *Brassica napus*. *Journal of Visualized Experiments*, 202. [HTTPS://DOI.ORG/10.3791/66223](https://doi.org/10.3791/66223)

PÍREK, P., KRYŠTOFOVÁ, K., KOVÁČOVÁ, I., KROMEROVÁ, A., ZACHOVÁ, D., HELIA, O., PANZAROVÁ, K., FAJKUS, J., ZDRÁHAL, Z., LOCHMANOVÁ, G., & FOJTOVÁ, M. (2023). Unraveling Epigenetic Changes in *A. thaliana* Calli: Impact of HDAC Inhibitors. *Plants*, 12(24), 4177. [HTTPS://DOI.ORG/10.3390/PLANTS12244177](https://doi.org/10.3390/plants12244177)

2022

ARSHAD, R., SACCON, F., BAG, P., BISWAS, A., CALVARUSO, C., BHATTI, A. F., GREBE, S., MASCOLI, V., MAHBUB, M., MUZZOPAPPA, F., POLYZOIS, A., SCHIPHORST, C., **SORRENTINO, M.**, STRECKAITÉ, S., VAN AMERONGEN, H., ARO, E.-M., BASSI, R., BOEKEMA, E. J., CROCE, R., ... BÜCHEL, C. (2022).



A kaleidoscope of photosynthetic antenna proteins and their emerging roles. *Plant Physiology*, 189(3), 1204–1219.

[HTTPS://DOI.ORG/10.1093/PLPHYS/KIAC175](https://doi.org/10.1093/plphys/kiac175)

SARIĆ, R., NGUYEN, V. D., BURGE, T., BERKOWITZ, O., TRTÍLEK, M., WHELAN, J., LEWSEY, M. G., ČUSTOVIĆ, E. (2022).

Applications of hyperspectral imaging in plant phenotyping, *Trends in Plant Science*, Volume 27, Issue 3. [HTTPS://DOI.ORG/10.1016/J.TPLANTS.2021.12.003](https://doi.org/10.1016/j.tplants.2021.12.003).

SORRENTINO, M., PANZAROVÁ, K., SPYROGLOU, I., SPÍČHAL, L., BUFFAGNI, V., GANUGI, P., ROUPHAEL, Y., COLLA, G., LUCINI, L., & DE DIEGO, N. (2022).

Integration of Phenomics and Metabolomics Datasets Reveals Different Mode of Action of Biostimulants Based on Protein Hydrolysates in *Lactuca sativa* L. and *Solanum lycopersicum* L. Under Salinity. *Frontiers in Plant Science*, 12.

[HTTPS://DOI.ORG/10.3389/FPLS.2021.808711](https://doi.org/10.3389/fpls.2021.808711)

2021

ABDELHAKIM, L. O. A., ROSENQVIST, E., WOLLENWEBER, B., SPYROGLOU, I., OTTOSEN, C.-O., & PANZAROVÁ, K. (2021).

Investigating Combined Drought- and Heat Stress Effects in Wheat under Controlled Conditions by Dynamic Image-Based Phenotyping. *Agronomy*, 11(2).

[HTTPS://DOI.ORG/10.3390/AGRONOMY11020364](https://doi.org/10.3390/agronomy11020364)



AWLIA, M., ALSHAREEF, N., SABER, N., KORTE, A., OAKLEY, H., **PANZAROVÁ, K.**, **TRTÍLEK, M.**, NEGRÃO, S., TESTER, M., & JULKOWSKA, M. M. (2021).

Genetic mapping of the early responses to salt stress in *Arabidopsis thaliana*. *The Plant Journal*, 107(2), 544–563.

[HTTPS://DOI.ORG/10.1111/TPJ.15310](https://doi.org/10.1111/TPJ.15310)

SORRENTINO, M., DE DIEGO, N., UGENA, L., SPÍCHAL, L., LUCINI, L., MIRAS-MORENO, B., ZHANG, L., ROUPHAEL, Y., COLLA, G., & **PANZAROVÁ, K.** (2021).

Seed Priming With Protein Hydrolysates Improves *Arabidopsis* Growth and Stress Tolerance to Abiotic Stresses. *Frontiers in Plant Science*, 12.

[HTTPS://DOI.ORG/10.3389/FPLS.2021.626301](https://doi.org/10.3389/fpls.2021.626301)

ULLAH, S., HENKE, M., NARISSETTI, N., **PANZAROVÁ, K.**, **TRTÍLEK, M.**, HEJATKO, J., & GLADILIN, E. (2021).

Towards Automated Analysis of Grain Spikes in Greenhouse Images Using Neural Network Approaches: A Comparative Investigation of Six Methods. *Sensors*, 21(22), 7441.

[HTTPS://DOI.ORG/10.3390/S21227441](https://doi.org/10.3390/S21227441)

2020

FLÜTSCH, S., NIGRO, A., CONCI, F., FAJKUS, J., THALMANN, M., **TRTÍLEK, M.**, **PANZAROVÁ, K.**, & SANTELIA, D. (2020).

Glucose uptake to guard cells via STP transporters provides carbon sources for stomatal opening and plant growth. *EMBO Reports*, 21(8).

[HTTPS://DOI.ORG/10.15252/EMBR.201949719](https://doi.org/10.15252/EMBR.201949719)

SHAPIGUZOV, A., NIKKANEN, L., FITZPATRICK, D., VAINONEN, J. P., GOSSENS, R., ALSEEKH, S., AARABI, F., TIWARI, A., BLOKHINA, O., **PANZAROVÁ, K.**, **BENEDIKTY, Z.**, TYYSTJÄRVI, E., FERNIE, A. R., **TRTÍLEK, M.**, ARO, E.-M., RINTAMÄKI, E., & KANGASJÄRVI, J. (2020).

Dissecting the interaction of photosynthetic electron transfer with mitochondrial signalling and hypoxic response in the *Arabidopsis rcd1* mutant. *Philosophical Transactions of the Royal Society B: Biological Sciences*, 375(1801), 20190413.

[HTTPS://DOI.ORG/10.1098/RSTB.2019.0413](https://doi.org/10.1098/RSTB.2019.0413)

SORRENTINO, M., COLLA, G., ROUPHAEL, Y., **PANZAROVÁ, K.**, & **TRTÍLEK, M.** (2020).

Lettuce reaction to drought stress: automated high-throughput phenotyping of plant growth and photosynthetic performance. *Acta Horticulturae*, 1268, 133–142.

[HTTPS://DOI.ORG/10.17660/ACTAHORTIC.2020.1268.17](https://doi.org/10.17660/ACTAHORTIC.2020.1268.17)



2019

PAUL, K., SORRENTINO, M., LUCINI, L., ROUPHAEL, Y., CARDARELLI, M., BONINI, P., MIRAS MORENO, M. B., REYNAUD, H., CANAGUIER, R., TRTÍLEK, M., PANZAROVÁ, K., & COLLA, G. (2019).

*A Combined Phenotypic and Metabolomic Approach for Elucidating the Biostimulant Action of a Plant-Derived Protein Hydrolysate on Tomato Grown Under Limited Water Availability. *Frontiers in Plant Science*, Volume 10-2019.*

[HTTPS://DOI.ORG/10.3389/FPLS.2019.00493](https://doi.org/10.3389/fpls.2019.00493)

PAUL, K., SORRENTINO, M., LUCINI, L., ROUPHAEL, Y., CARDARELLI, M., BONINI, P., REYNAUD, H., CANAGUIER, R., TRTÍLEK, M., PANZAROVÁ, K., & COLLA, G. (2019).

*Understanding the Biostimulant Action of Vegetal-Derived Protein Hydrolysates by High-Throughput Plant Phenotyping and Metabolomics: A Case Study on Tomato. *Frontiers in Plant Science*, Volume 10-2019.*

[HTTPS://DOI.ORG/10.3389/FPLS.2019.00047](https://doi.org/10.3389/fpls.2019.00047)

2018

ILÍK, P., ŠPUNDOVÁ, M., ŠICNER, M., MELKOVIČOVÁ, H., KUČEROVÁ, Z., KRCHŇÁK, P., FÜRST, T., VEČEŘOVÁ, K., PANZAROVÁ, K., BENEDIKTYOVÁ, Z., & TRTÍLEK, M. (2018).

*Estimating heat tolerance of plants by ion leakage: a new method based on gradual heating. *New Phytologist*, 218(3), 1278–1287.*

[HTTPS://DOI.ORG/10.1111/NPH.15097](https://doi.org/10.1111/NPH.15097)

ROUPHAEL, Y., SPÍCHAL, L., PANZAROVÁ, K., CASA, R., & COLLA, G. (2018).

*High-Throughput Plant Phenotyping for Developing Novel Biostimulants: From Lab to Field or From Field to Lab? *Frontiers in Plant Science*, 9.*

[HTTPS://DOI.ORG/10.3389/FPLS.2018.01197](https://doi.org/10.3389/fpls.2018.01197)

2016

AWLIA, M., NIGRO, A., FAJKUS, J., SCHMOECKEL, S. M., NEGRÃO, S., SANTELIA, D., TRTÍLEK, M., TESTER, M., JULKOWSKA, M. M., & PANZAROVÁ, K. (2016).

*High-Throughput Non-destructive Phenotyping of Traits that Contribute to Salinity Tolerance in *Arabidopsis thaliana*. *Frontiers in Plant Science*, 7.*

[HTTPS://DOI.ORG/10.3389/FPLS.2016.01414](https://doi.org/10.3389/fpls.2016.01414)

